

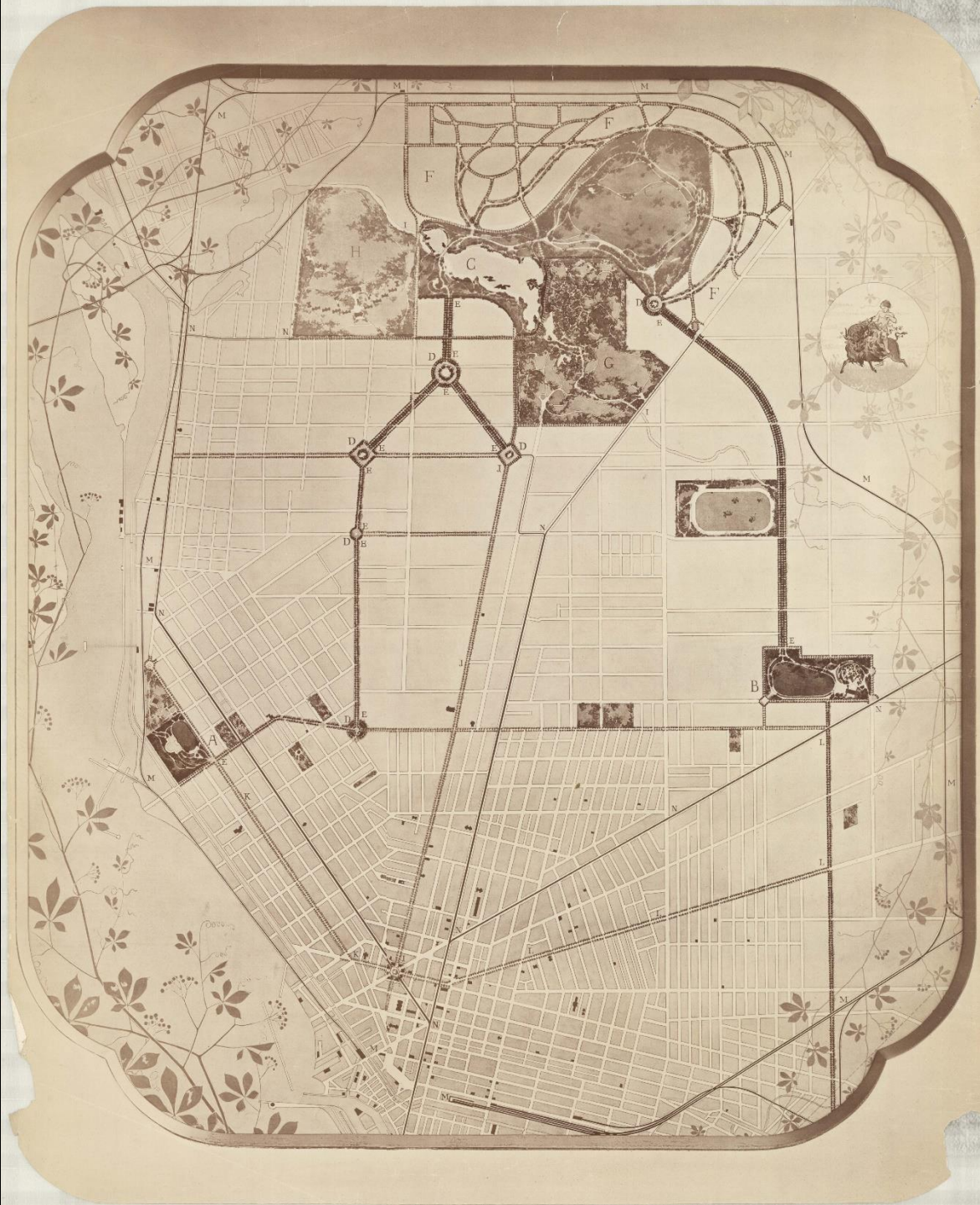
Option Studio:

BIG PROJECTS STUDIO

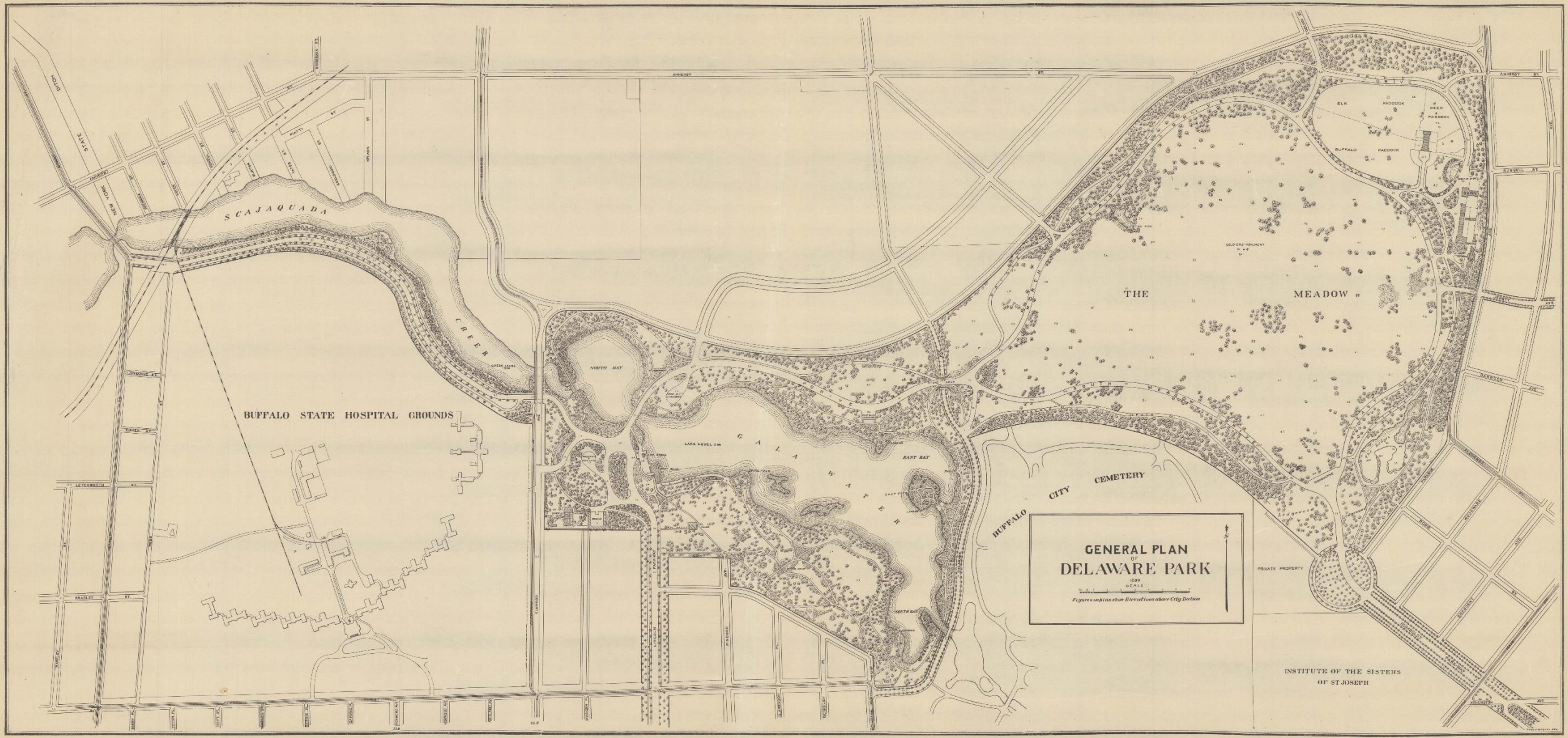
In Partnership with Gensler and CannonDesign



What was the first “big project” in
BUFFALO?







SCAJAQUADA
CREEK

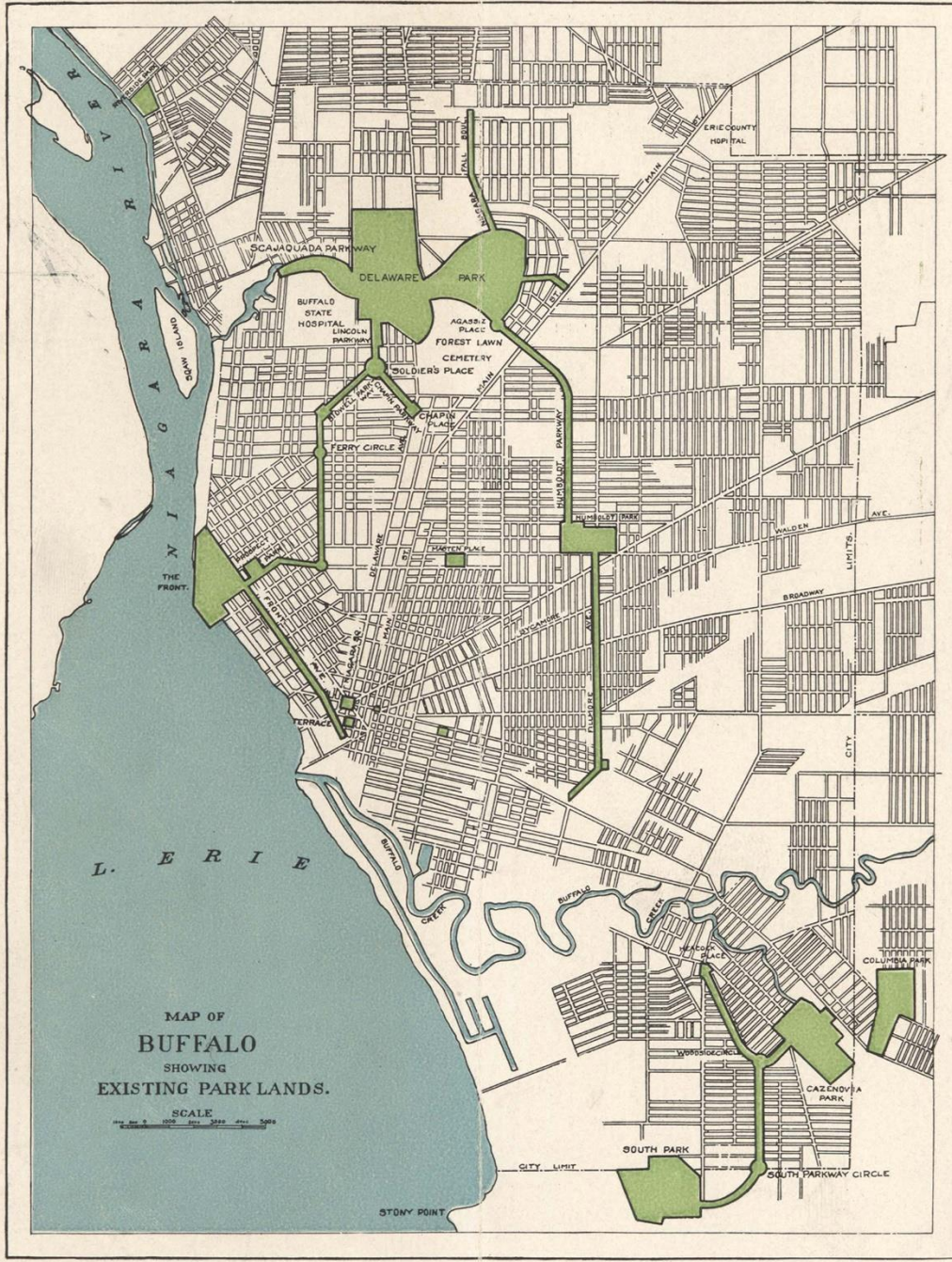
BUFFALO STATE HOSPITAL GROUNDS

THE
MEADOW

BUFFALO CITY
CEMETERY

**GENERAL PLAN
DELAWARE PARK**
1000
SCALE
Figures on this show Elevations above City Datum

INSTITUTE OF THE SISTERS
OF ST. JOSEPH



L. E R I E

MAP OF
BUFFALO
 SHOWING
 EXISTING PARK LANDS.

SCALE
 1/4" = 100' 1" = 1200'

STONY POINT

Destruction in the

20th CENTURY

















Current proposals in the
21st CENTURY

Status quo option

Maintains present function of expressway, addresses safety concerns, creates additional multimodal connectivity



At-grade option

Replaces expressway with at-grade tree lined boulevard, maintains neighborhood roadway access, integrates with neighborhoods



Partial expressway removal option

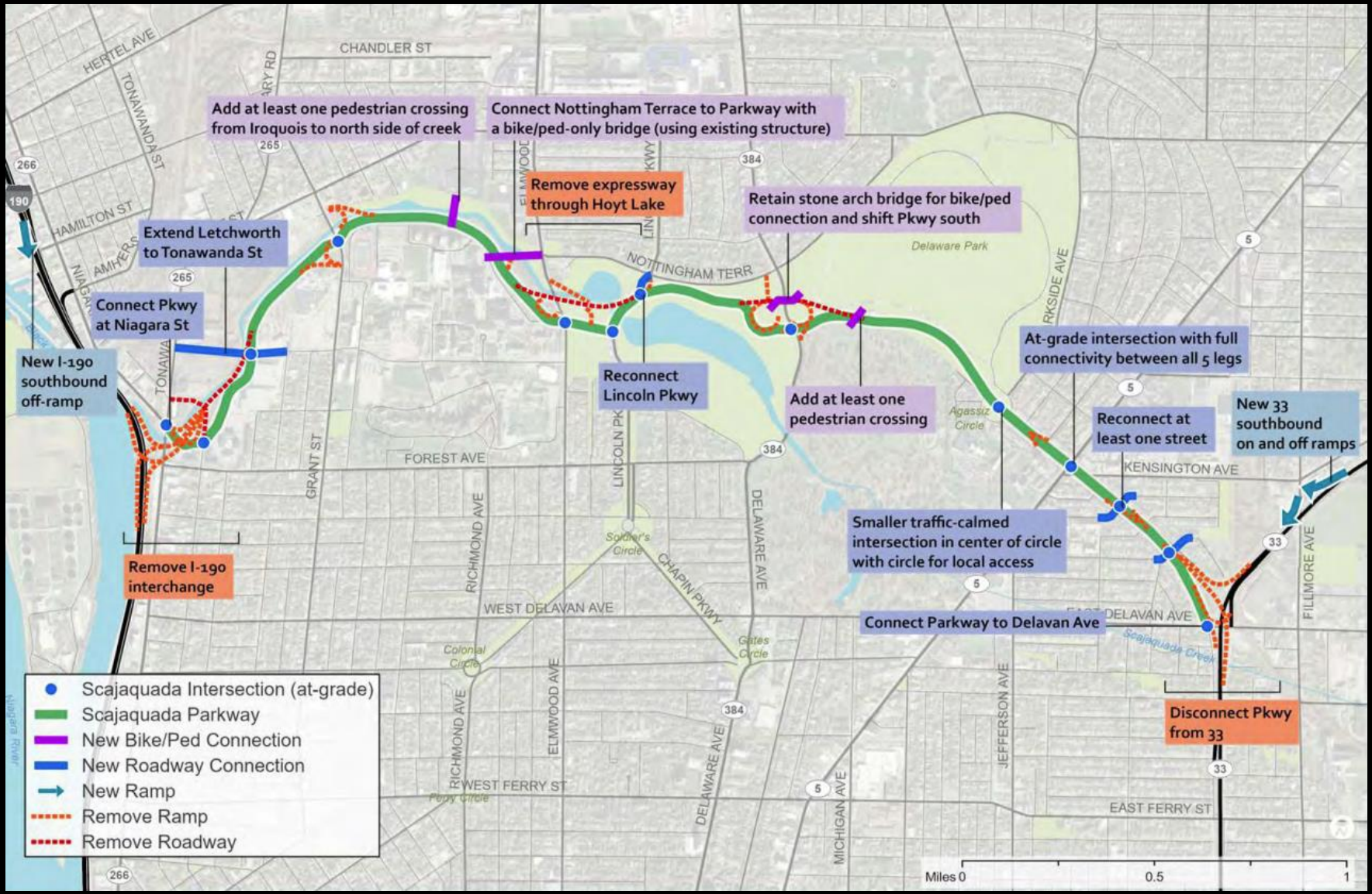
Retains portions of the expressway, removes expressway within park areas, maintains neighborhood roadway access



Full expressway removal option

Removes expressway, local street network accommodates movement through the area, adds options to cross creek for north-south travel





Add at least one pedestrian crossing from Iroquois to north side of creek

Connect Nottingham Terrace to Parkway with a bike/ped-only bridge (using existing structure)

Remove expressway through Hoyt Lake

Retain stone arch bridge for bike/ped connection and shift Pkwy south

Extend Letchworth to Tonawanda St

Connect Pkwy at Niagara St

New I-190 southbound off-ramp

Reconnect Lincoln Pkwy

Add at least one pedestrian crossing

At-grade intersection with full connectivity between all 5 legs

Reconnect at least one street

New 33 southbound on and off ramps

Remove I-190 interchange

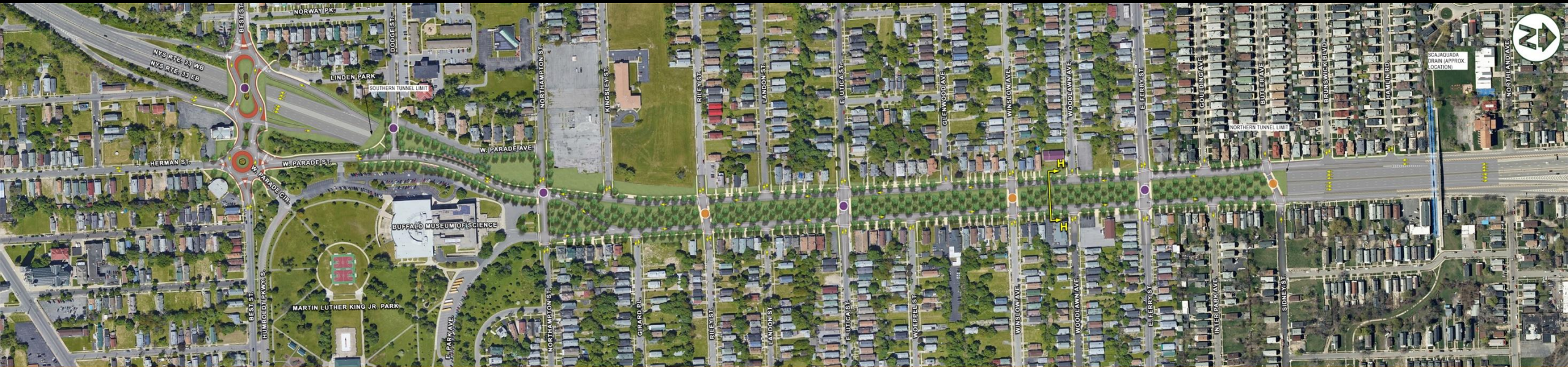
Smaller traffic-calmed intersection in center of circle with circle for local access

Connect Parkway to Delavan Ave

Disconnect Pkwy from 33

- Scajaquada Intersection (at-grade)
- Scajaquada Parkway
- New Bike/Ped Connection
- New Roadway Connection
- ➔ New Ramp
- - - Remove Ramp
- - - Remove Roadway

Miles 0 0.5 1



NYS Route 33, Kensington Expressway Project
 Build Alternative - Kensington Reconstruction with a 6-Lane Tunnel for Improved Community Connections, including a Tree-Lined Parkway Setting

- LEGEND:**
- REPLACEMENT BRIDGES
 - NEW BRIDGE CONNECTIONS
 - SEE RELATED SECTION RENDERING
 - DIRECTION OF TRAVEL





Scope of next semester's

BIG PROJECTS STUDIO









Ecological Urbanism Is the Future for Cities in the GCC

November 27, 2023 | By Steven Velegrinis

Editor's Note: This blog post was originally published in [Amazing Architecture](#).

According to the United Nations, the proportion of people living in cities is expected to increase to an estimated 66% of the total world population by 2050. By this time, the global population level would be more than 9 billion, with most of the growth occurring in less economically developed countries. Compare this to a pre-COVID 2018, which saw 55% of the world's population residing in urban areas. Overall, 4.2 billion people resided in urban settlements compared to 3.4 billion in rural areas. In 1950, only one third (30%) of

RELATED CONTENT



IN THE MEDIA

Gulf Construction

Gulf Construction published insights from Gensler Middle East Design Director Steven Velegrinis...



IN THE MEDIA

Emirates Green Building Council

Emirates Green Building Council featured insights co-presented by Gensler's Steven Velegrinis and...



IN THE MEDIA

Commercial Interior Design

Commercial Interior Design shared that Steven Velegrinis has been appointed Design Director for...



BLOG

Why It's Time to Apply Regenerative Systems Design on a Global Scale



BLOG

How Biophilia, Biomimicry, and Bioclimatic Strategies Will Transform the Future of Design



BLOG

Why Circular Cities Play a Critical Role in Restoring Ecologies



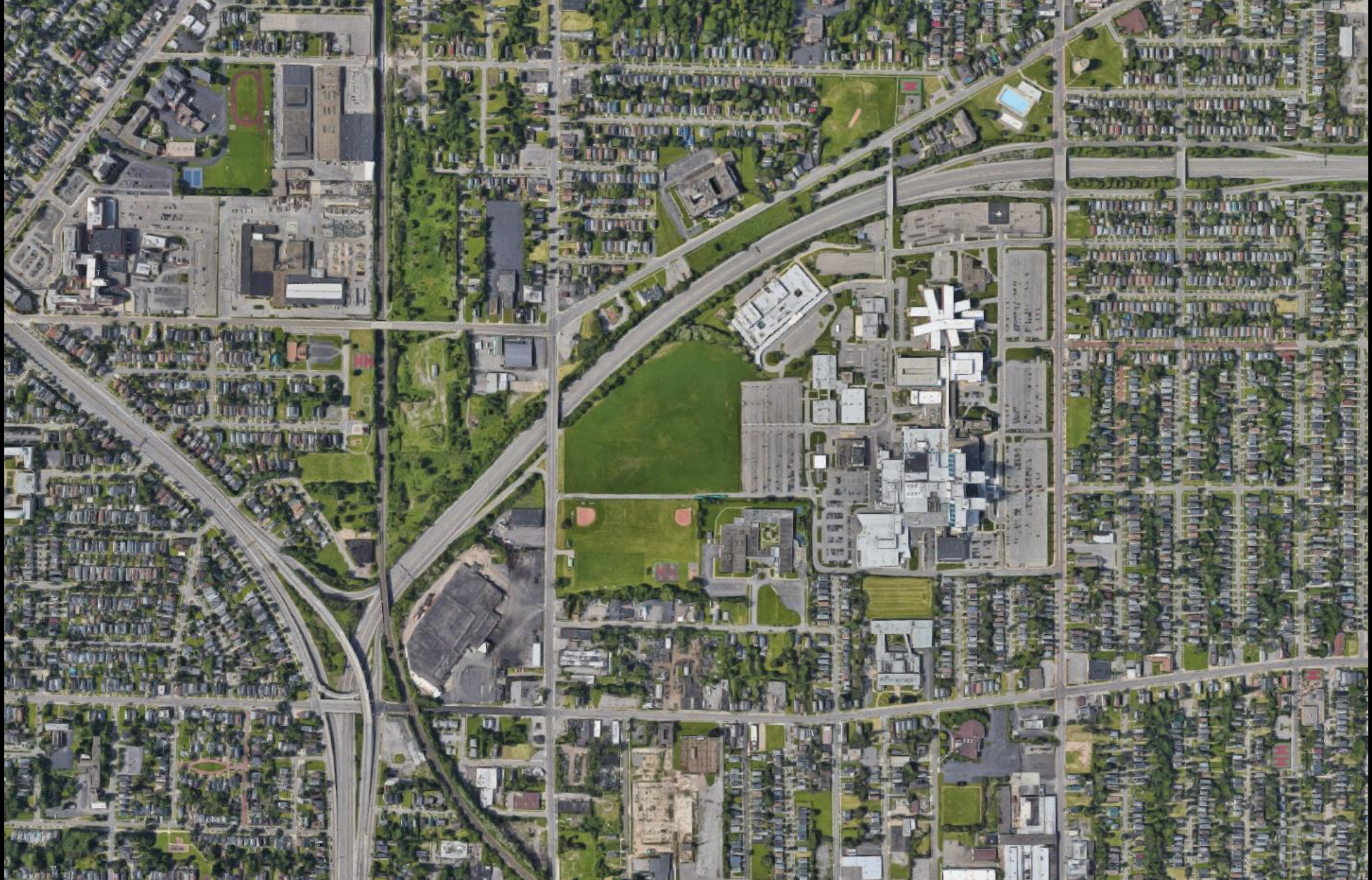
BLOG

A Q&A with a Costa Rican Mayor about the Future of City Design











[Ambitions](#)
[Culture](#)
[Work](#)
[Capabilities](#)
[About](#)

[Search](#)
[Contact](#)
[Careers](#)

Plans for Growth and Impact

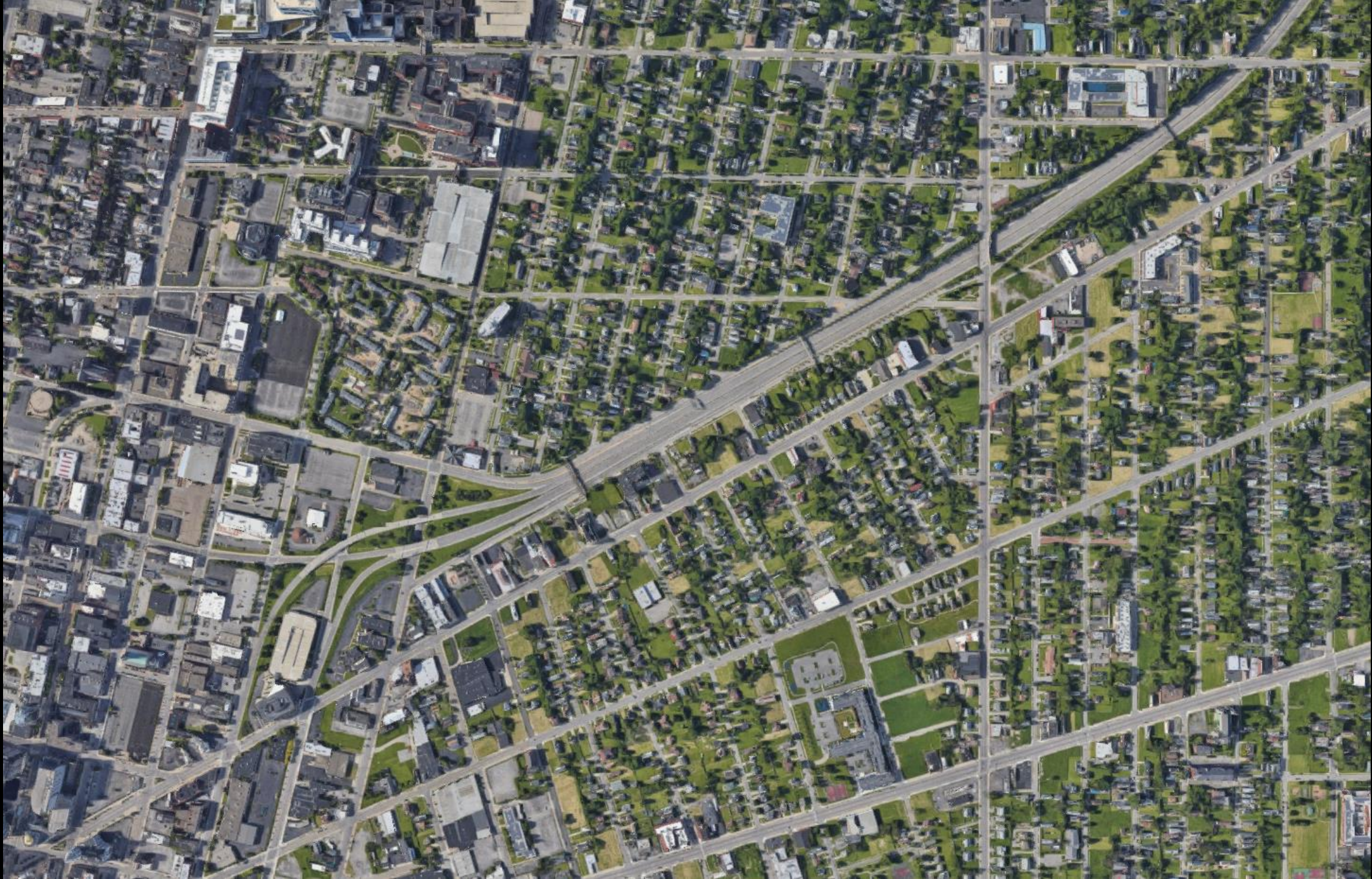
Creating dynamically different futures





WP
West Park
HEALTHCARE CENTRE

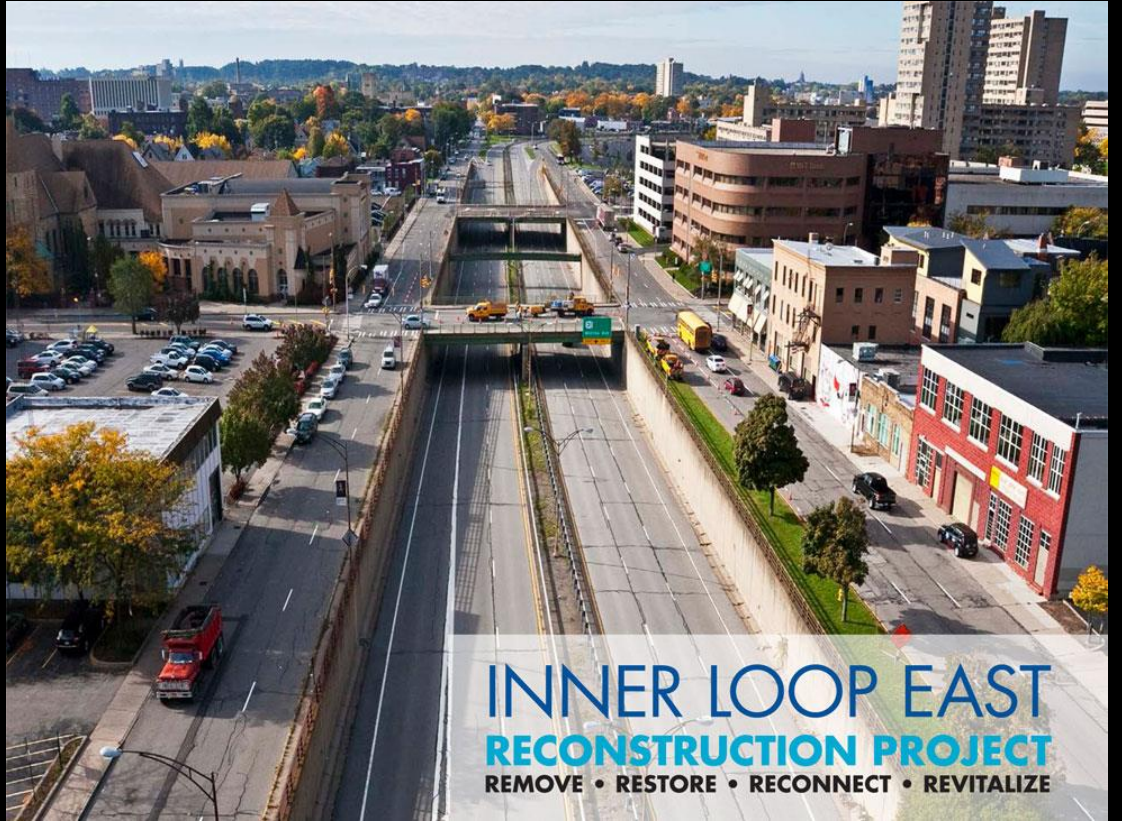
WEST PARK HEALTHCARE CENTRE

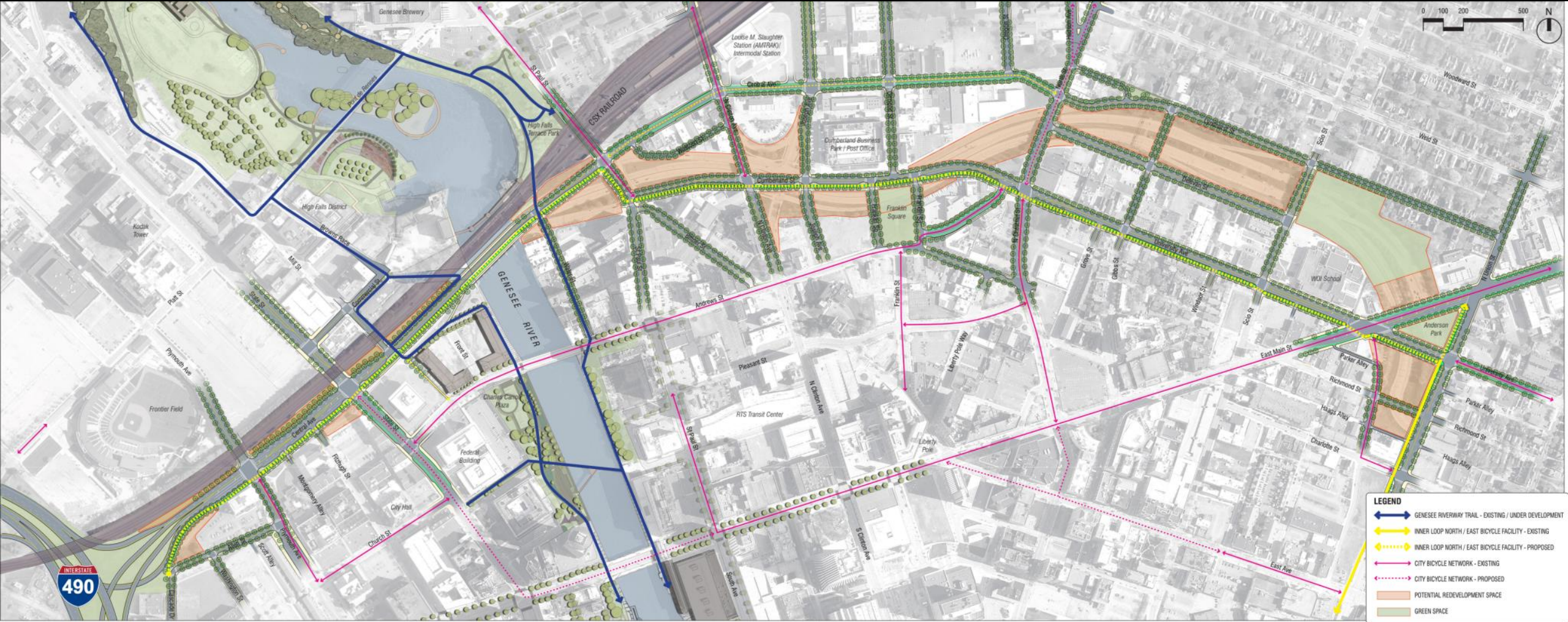




Partially-subsidized

TRAVEL



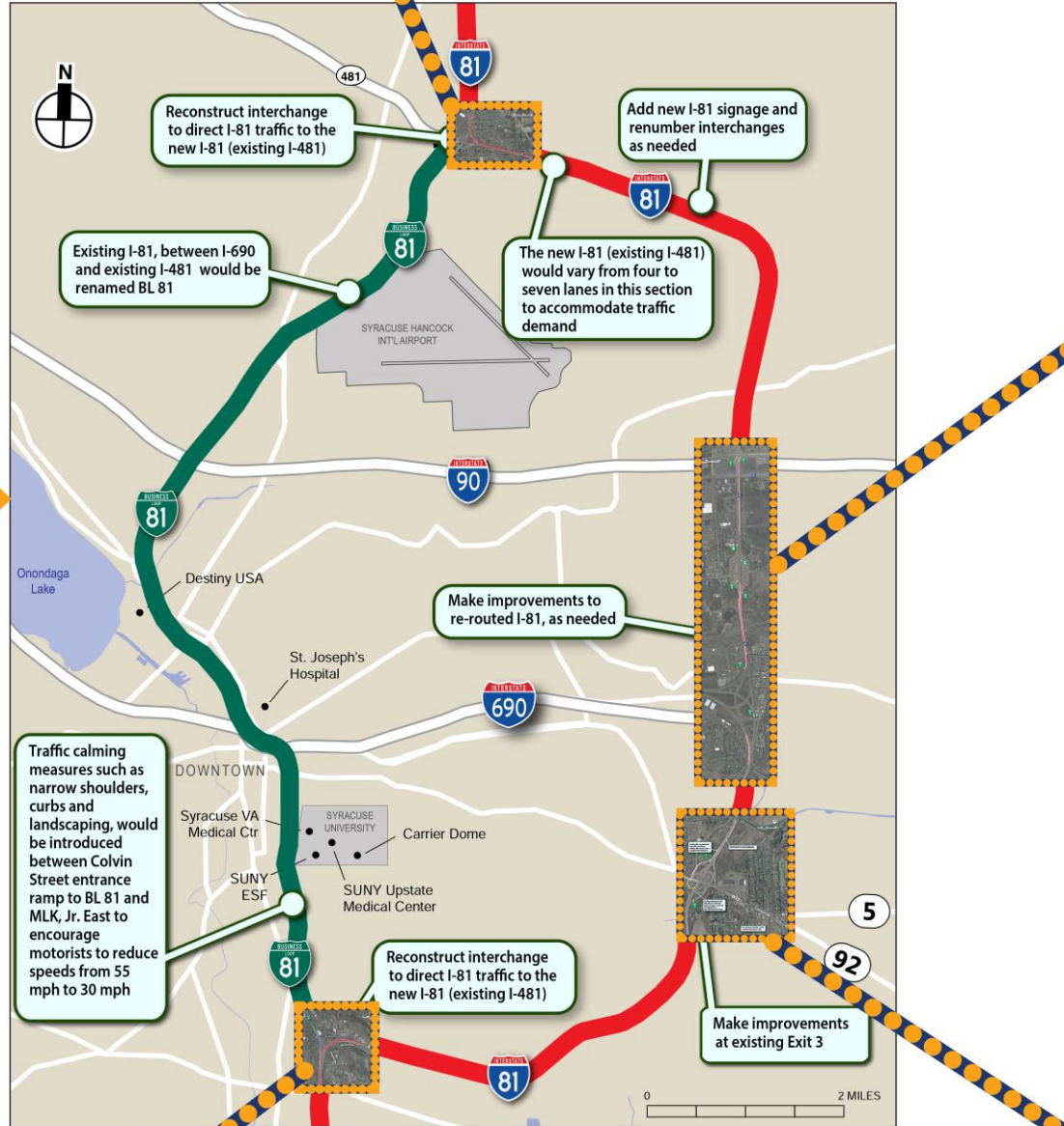
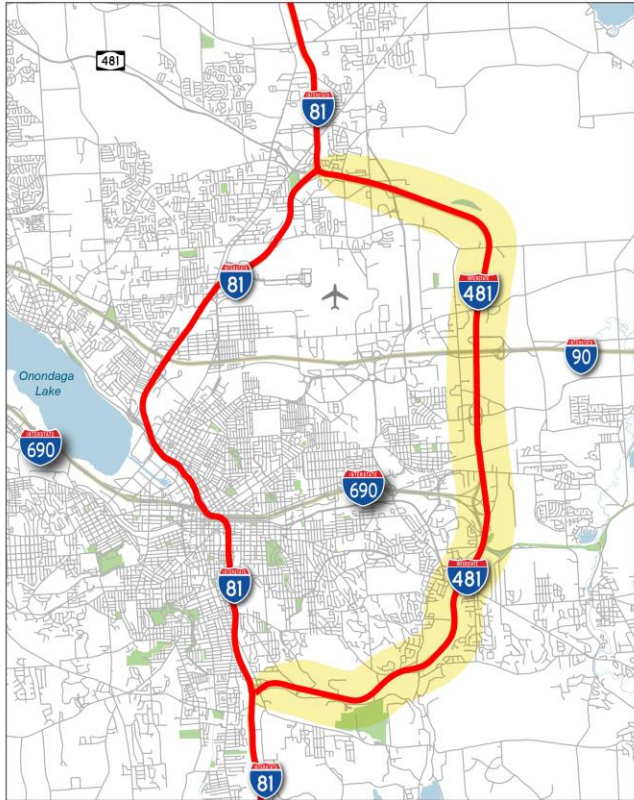


- LEGEND**
- GENESSEE RIVERWAY TRAIL - EXISTING / UNDER DEVELOPMENT
 - INNER LOOP NORTH / EAST BICYCLE FACILITY - EXISTING
 - INNER LOOP NORTH / EAST BICYCLE FACILITY - PROPOSED
 - CITY BICYCLE NETWORK - EXISTING
 - CITY BICYCLE NETWORK - PROPOSED
 - POTENTIAL REDEVELOPMENT SPACE
 - GREEN SPACE

INTERSTATE
490

Proposed BL 81 and I-81

Existing I-81 and I-481





Option Studio:

BIG PROJECTS STUDIO

In Partnership with Gensler and CannonDesign